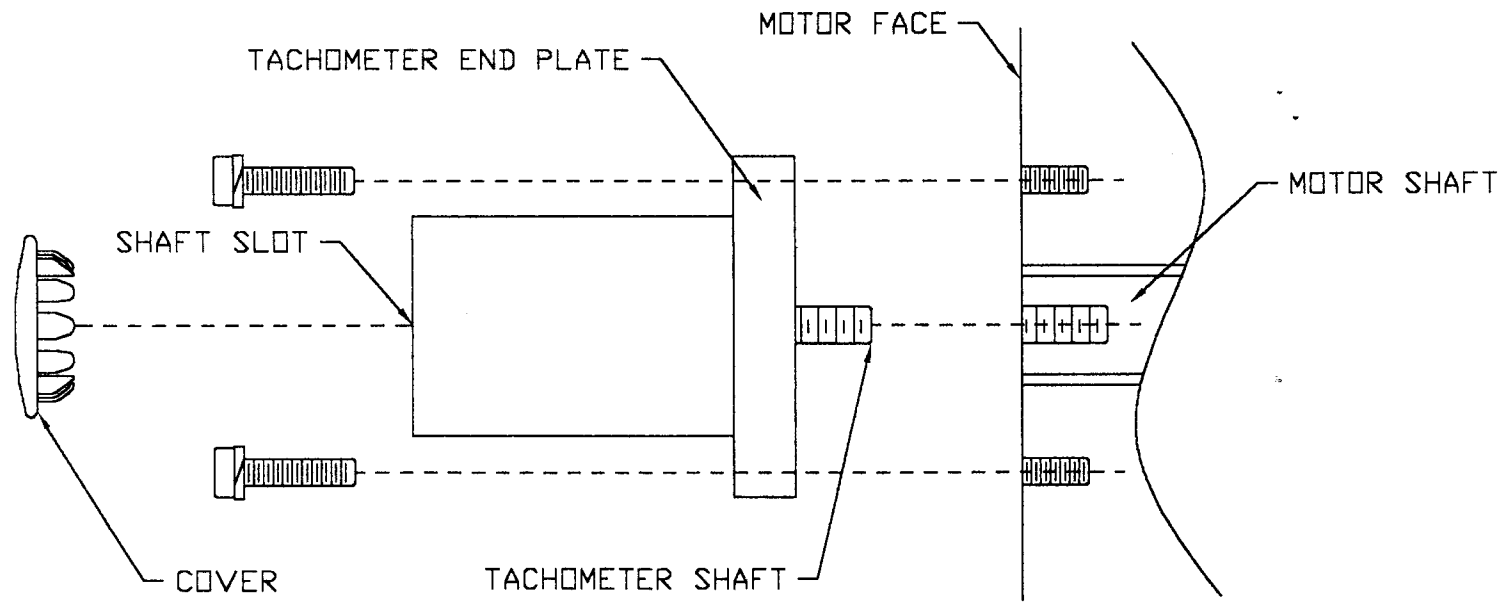


INSTALLATION INSTRUCTIONS

1. Apply one drop of thread lock (Loctite 609) to tachometer shaft threads. Screw the tachometer shaft into the motor shaft using the screw slot in the rear of the shaft and torque to 20 - 25 inch-pounds.
CAUTION: The tachometer end plate should mate within 0.050 of the motor face. The tachometer wires should remain in the clearance slots in the end plate.
2. Align the tachometer bolt holes with the 6-32 tapped holes in the motor face. Install but do not fully tighten the two 6-32 x 5/8 screws and #6 lockwashers.
3. Slowly rotate the motor shaft to assure the armature does not touch the housing. Adjust the position of the housing as necessary to maintain a clearance with the armature during full rotation. Tighten both 6-32 screws to 8 inch-pounds.
4. Install supplied snap-in cover at the open end of the tachometer.



		<u>UNLESS OTHERWISE SPECIFIED THESE NOTES APPLY</u>		SERVO-TEK PRODUCTS COMPANY HAWTHORNE, N.J.				
	CO#	1. TOLERANCES: .XXXX ±.0005, .XXX ±.005, .XX ±.01, ANGLE ±0°30' 2. SHARP CORNERS AND EDGES BROKEN WITH .005 R OR CHAMFER.		MAT'L	HEAT TREAT	PAGE 1 OF 2	DWN BY DEB	CHK BY <i>NR</i>
	BY			ORIGINALLY DESIGNED FOR	SCALE 1:1	DATE 01-16-03	DATE 03-14-03	
	DATE			PART NAME	DWG. NO.			REV.
	SCALE DRAWING			OVERHUNG TACHOMETER	ST-13908			A

TACHOMETER TO MOTOR MOUNTING SPECIFICATIONS

6-32 NC-2 X 0.35 DP
2 PLCS ON 1.500 B.C.

⊙ $\varnothing 0.003$ A

$\varnothing 1.750$
TACHOMETER
CLEARANCE
DIAMETER

MOTOR SHAFT END WITHIN
 ± 0.010 OF MOTOR FACE

DATUM A
AXIS OF SHAFT ROTATION

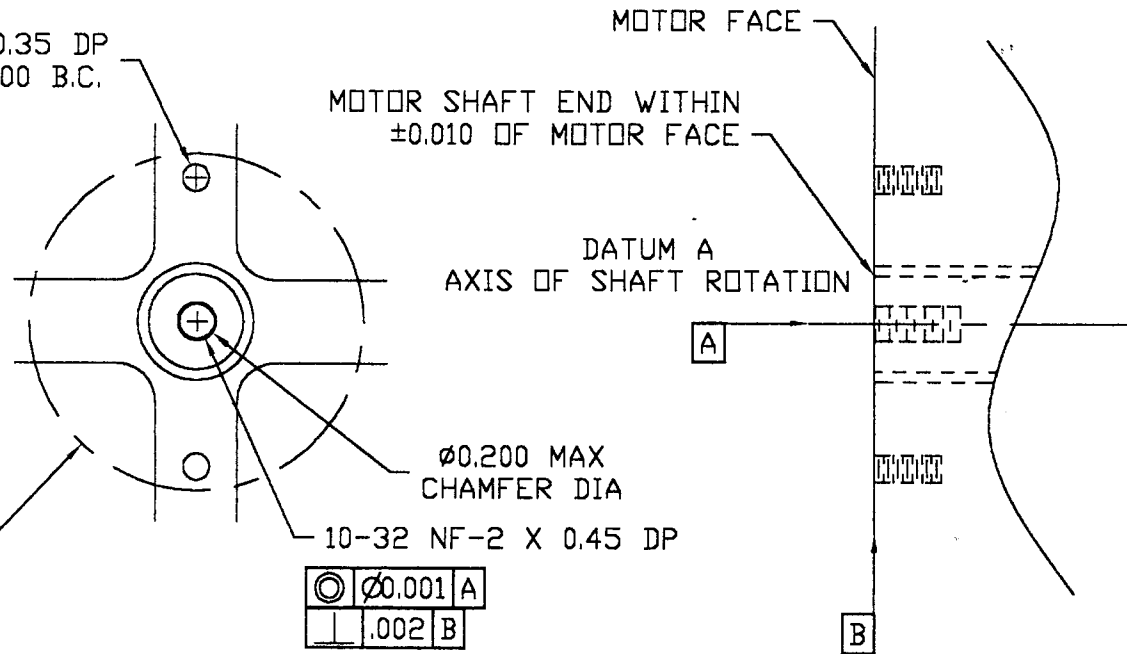
$\varnothing 0.200$ MAX
CHAMFER DIA

10-32 NF-2 X 0.45 DP

⊙ $\varnothing 0.001$ A

⊥ .002 B

MOTOR FACE



UNLESS OTHERWISE SPECIFIED THESE NOTES APPLY

1. TOLERANCES: .XXXX ± 0.0005 , .XXX ± 0.005 , .XX ± 0.01 , ANGLE $\pm 0^{\circ}30'$
2. SHARP CORNERS AND EDGES BROKEN WITH .005 R OR CHAMFER.

SERVO-TEK PRODUCTS COMPANY
HAWTHORNE, N.J.

MAT'L	HEAT TREAT	PAGE 2 OF 2	DWN BY DEB	CHK BY <i>W</i>
ORIGINALLY DESIGNED FOR		SCALE 1:1	DATE 01-16-03	DATE 03-14-03
PART NAME OVERHUNG TACHOMETER		DWG. NO. ST-13908	REV. A	

DATE	BY	CO#

DO NOT
SCALE DRAWING